



Wedi'i gefnogi gan Granfa Dreftadaeth y Loteri Genedlaethol a Llywodraeth Cymru
Supported by the National Lottery Heritage Fund and Welsh Government



Water Quality Briefing Note



Natur am Byth! Nature Forever - Saving Wales' threatened species

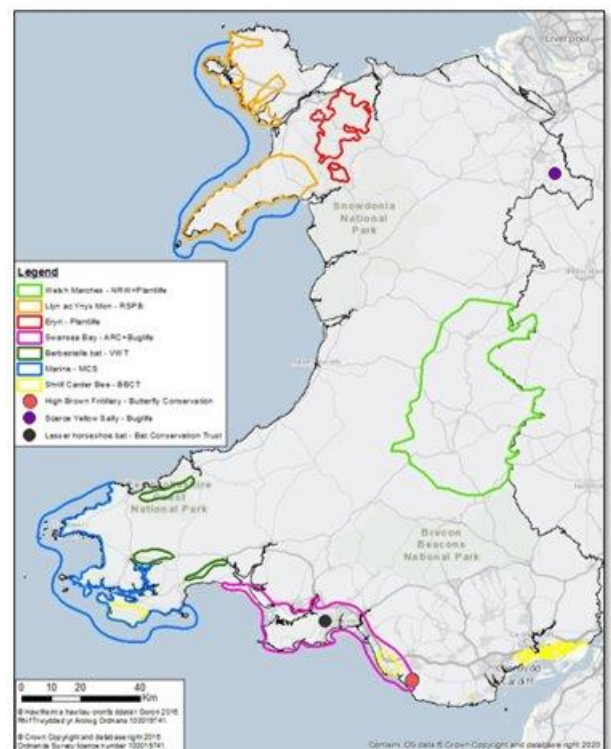
[Natur am Byth!](#) is Wales' flagship conservation project, a partnership of nine environmental charities with Natural Resources Wales that will protect endangered species and reconnect the public with their natural heritage. We are currently in our 18-month project development phase, culminating in submission of our funding bid to the National Lottery Heritage Fund in March 2023. If that bid is successful, our four-year delivery period will commence in September 2023.

We aim to engage in monitoring, recruiting volunteers, and support landowners with capital works. At the same time, we will work with local communities and stakeholders to engage the people of Wales with nature conservation and help people to access and enjoy the wildlife around them. Our long-term vision is that:

- people and wildlife flourish together in recovering habitats
- people from all walks of life in Wales will feel that they belong in, enjoy and care for nature
- organisations across the fabric of Welsh society will work together to care for nature and value the benefits their community get from it
- we'll have a resilient nature conservation, environment and land management sector that collaborates to make a bigger difference for species as part of healthy ecosystems.

Natur am Byth follows similar lottery-funded work in England ([Back from the Brink](#)) but importantly also includes the marine environment. [Species on the Edge](#) in Scotland is also currently in its development phase. Natur am Byth is made up of five integrated projects and six single species projects.

5 Integrated Projects		6 Single Species Projects	
Project	Core partners	Project	Core partners
Pen Llyn and Ynys Môn, Saving the Best of the North-West	RSPB (lead); Buglife; Plantlife; ARC; NRW	Adder Action	ARC (lead); Plantlife; Buglife
Eryri Arctic-alpines	Plantlife (lead); Buglife; NRW	Barbastelle Bat	Vincent Wildlife Trust (lead); Buglife; NRW
Welsh Marine Treasures	MCS (lead); NRW; RSPB	Swansea's Stars of the night (lesser horseshoe bat)	Bat Conservation Trust (lead); VWT; Buglife
Swansea Bay Coast, Commons & Communities	Buglife & ARC (joint leads); NRW; Plantlife; Butterfly Conservation	Scarce yellow sally	Buglife (lead); NRW
Welsh Marches	NRW (lead); Plantlife; Buglife	Saving the Shril Carder Bee in Wales (Cardiff, Newport, Bridgend, S.Pembs)	Bumblebee Conservation Trust (lead); ARC; Buglife; Plantlife; NRW
		High brown fritillary	Butterfly Conservation (lead); Buglife; BBCT; NRW




One of these is **The Welsh Marine Treasures project** led by the [Marine Conservation Society](#). It will focus on preserving important and endangered marine species including Seagrass, the Pink Sea Fan, Crawfish and the Native Oyster. We are also engaged in a national campaign to improve water quality across the Welsh Coast.

Marine work in the two main locations for Welsh Marine Treasures is being aided by:

- **Llŷn & Ynys Môn** regional coordinator Alison Palmer Hargrave (Pen Llŷn a'r Sarnau SAC Officer) AlisonPalmerHargrave@gwynedd.llyw.cymru
Lead for the Seagrass, Crawfish and Water Quality work packages.
- **Pembrokeshire** regional coordinator Sue Burton sue.burton@mhpa.co.uk (Pembrokeshire Marine SAC Officer)
Lead for the Pink Sea Fan and Native Oyster work packages.

Water quality work within the development phase is covering the following:



Water Quality

- Review of existing water quality projects, initiatives and monitoring
- Stakeholder workshop to share information and experiences
- Collaboratively develop a water quality strategy that aligns with existing initiatives and mechanisms
- Scoping options for citizen science

Cydlynnydd Rhanbarthol Llŷn & Môn Regional Coordinator: Alison Hargrave
Ffon / Tel: 01286 679495 **E-bost / E-mail:** alisonpalmerhargrave@gwynedd.llyw.cymru

