



Match It

Equipment required

- Copies of cards R_IS_1 (1-3), one per group
- Print out the 'Match It' worksheet, one per group

To complete the activity

1. Split the class into small groups.
2. Provide each group with a pack of cards including 5 species, 5 effects and 5 locations.
3. Support learners to work as a group to match the species, locations and effects and fill these out on their answer sheets.
4. The game can be extended by putting the packs in order of distance travelled, most likely to affect the local area or talking about how they think each species was introduced. Discuss answers with the whole class.

ANSWERS: Match It game

Geographical references in the species names were removed for game play.

Their full names are shown below:

- Mitten crab (Chinese mitten crab)
- Destabilises river banks by creating burrows
- China
- Rhododendron ponticum
- Toxic leaves make area uninhabitable for other species
- Bulgaria, Turkey, Spain, Portugal
- Himalayan balsam
- Out-competes native species for space, light and water
- India and Nepal
- Carpet sea squirt
- Spreads very rapidly smothering all other species
- Scientists are unsure of origin
- Mink (American mink)
- Eats bird eggs, young birds and other small animals
- USA



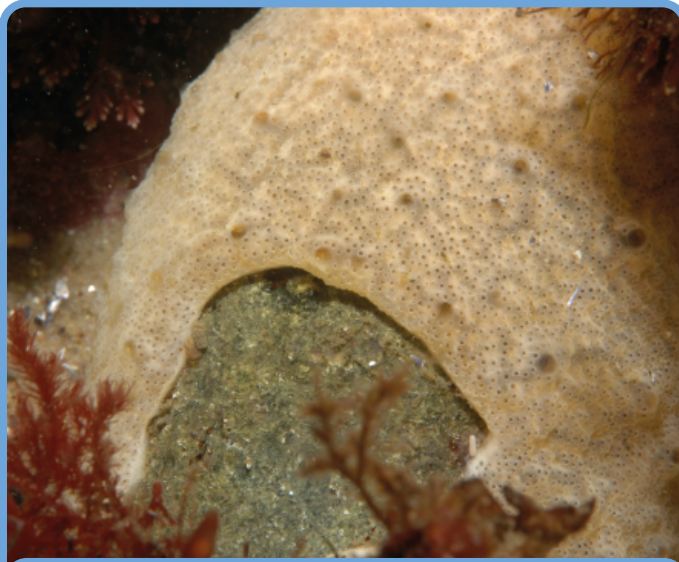
Mitten crab



Rhododendron ponticum



Himalayan balsam



Carpet sea squirt



Mink

Destabilises river
banks by creating
burrows

Toxic leaves
make area
uninhabitable
for other species

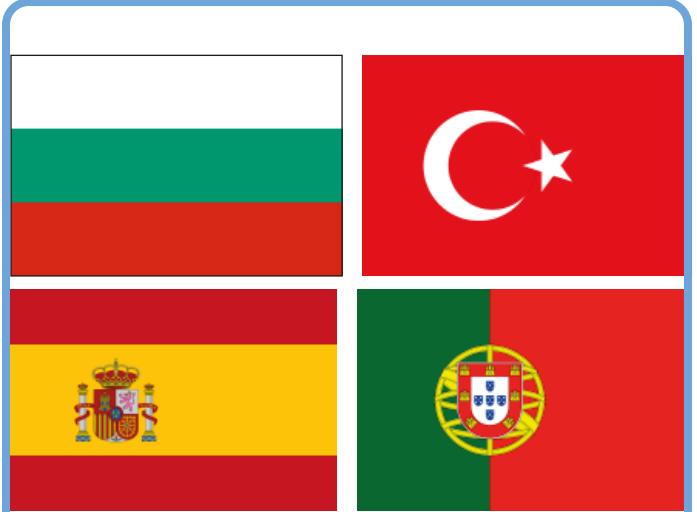
Out-competes
native species for
space, light and
water

Spreads
very rapidly,
smothering all
other species

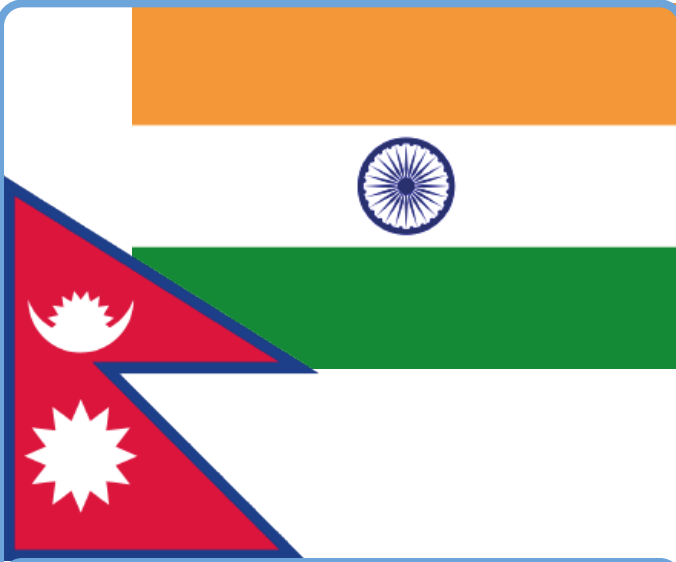
Eats bird eggs,
young birds
and other small
animals



China



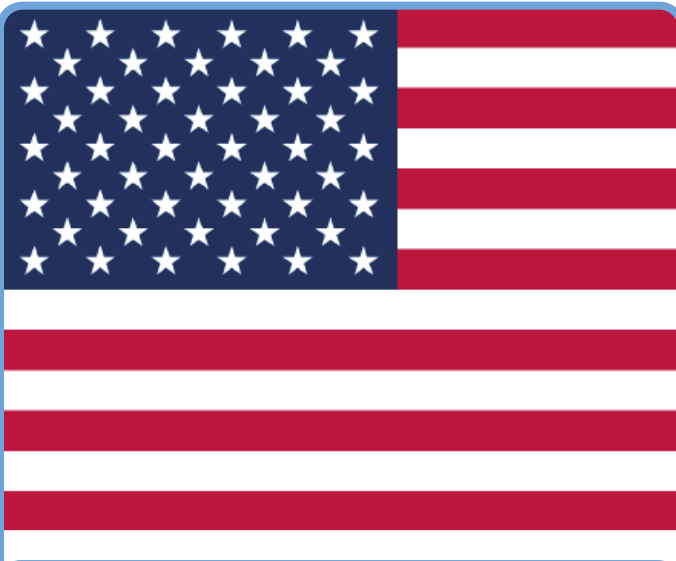
Bulgaria, Turkey, Spain, Portugal



India and Nepal



Not known



USA

Match It



Game rules: As a group, match the species to the effect it has on the environment and the country it originally came from.

1 Species:
Effects:
Comes from:

2 Species:
Effects:
Comes from:

3 Species:
Effects:
Comes from:

4 Species:
Effects:
Comes from:

5 Species:
Effects:
Comes from:



There are about 2.5 million grey squirrels in the UK, compared to 160,000 native red squirrels.