



Sea Search

Equipment required

- Print out of the 'Sea Search' worksheet for all learners
- Pencils or pens
- Internet enabled devices and internet access

To complete the activity

1. Hand out a copy of the 'Sea Search' worksheet to each learner. Ask learners to find all the words in the wordsearch grid and mark them off as they find them.
2. Once learners have found the words, ask them to research and write a fun fact or definition for each one. Encourage learner to use books, the internet, or prior knowledge to complete this, e.g., Starfish can regenerate lost arms!
3. Support learners to create "Who Am I?" riddles based on the words from the wordsearch. Each riddle should include at least two clues about the word, e.g. I have a hard shell, but I am not a crab. I cling to rocks and never move. Who am I? (Answer: Barnacle).

Once everyone has written their riddles, support them to take turns reading them aloud while the rest of the learners guess the answer.

Sea Search



Can you find the seashore plants and animals listed in the word search grid below?

B	A	R	N	A	C	L	E	V	E	Y	I	W	C	L	L	S	D	C	W
E	W	B	J	I	Z	S	T	A	R	F	I	S	H	X	A	W	E	O	A
A	T	H	J	P	T	W	H	A	I	U	S	S	E	Y	R	E	A	C	T
D	S	S	L	U	N	A	P	O	D	I	H	I	P	A	V	L	P	K	C
L	O	I	Z	E	E	F	E	P	R	L	T	P	C	A	T	P	S	L	G
E	L	F	T	G	E	N	N	L	K	E	H	K	I	I	U	X	G	E	J
T	P	R	U	G	V	I	K	B	L	E	C	G	A	C	S	Y	A	T	G
A	H	E	I	C	C	U	E	C	S	P	K	R	S	R	A	E	K	W	U
N	G	T	E	A	O	G	E	E	A	Y	L	V	A	N	K	E	L	P	T
E	X	T	E	S	P	X	B	I	B	S	E	O	J	B	E	L	E	I	W
M	N	U	B	E	L	E	I	O	M	U	S	S	E	L	E	L	H	R	E
O	A	B	H	I	Q	P	T	P	F	S	P	Y	K	S	J	B	W	L	E
N	I	X	D	E	U	M	S	Q	E	H	I	T	X	H	U	J	F	S	D
E	L	H	E	R	M	I	T	C	R	A	B	D	G	J	N	U	T	K	A
O	K	D	F	X	E	L	M	T	Y	W	O	U	P	R	A	W	N	E	N

Shore crab

Whelk

Barnacle

Mussel

Cockle

Limpet

Eggcase

Hermit crab

Gutweed

Wrack

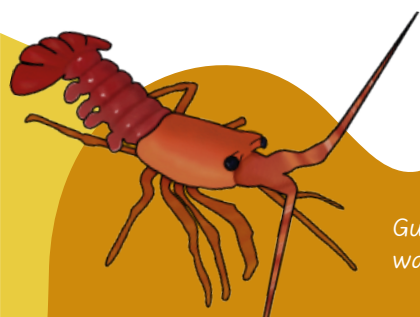
Starfish

Prawn

Beadlet anemone

Kelp

Butterfish



Gutweed is often found where fresh water runs down the beach.