

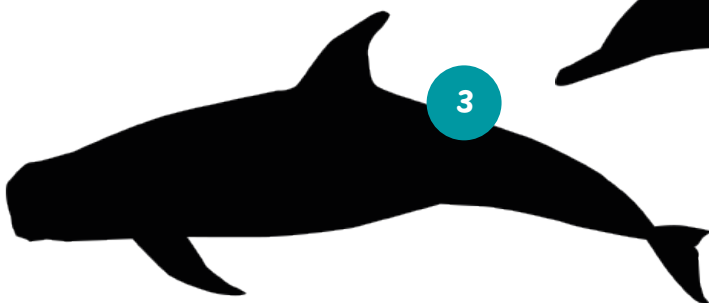
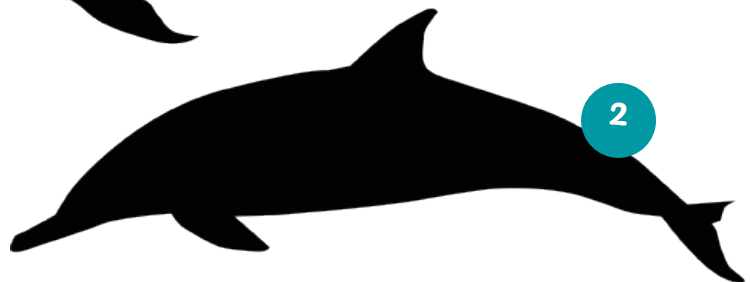
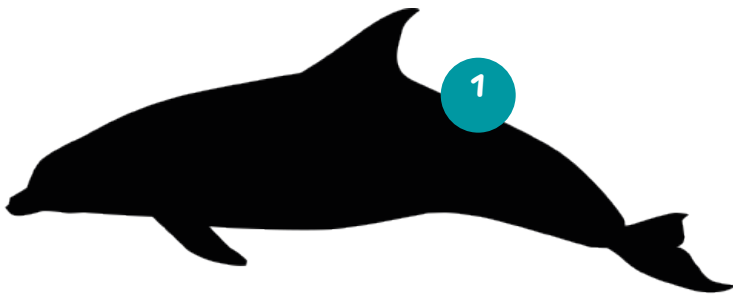


Guess the Marine Mammal

Which species can you see? Try to identify these different marine mammals found around the coast of Wales.

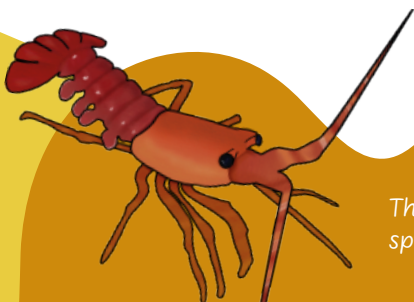
Look at the silhouettes provided and try to identify the different marine mammals. Pay attention to their shape, size, and features!

Think about the shape of their dorsal fin, beak or body size.



ADDITIONAL
TASK
Optional

What clues helped you identify each species?
How are porpoises different from dolphins?
Research and explain two key differences.



There are over 40 different species of dolphins worldwide!