

Oyster Challenges



1. Counting Oysters

A reef has 8 rows of oyster beds, and each row contains 12 oysters. How many oysters are there in total?

Answer: _____

2. Growth Rate

An oyster grows 2.5cm each year. How many centimetres will it grow in 4 years?

Answer: _____

3. Filtration Power

An oyster can filter 200 litres of water per day. How much water can 6 oysters filter in a week?

Answer: _____

4. Weight Calculation

If one oyster weighs 250 grams, what is the total weight of 15 oysters?

Answer: _____

5. Volume Problem

A tank holds 120 litres of water. If each oyster needs 6 litres of water to survive, how many oysters can live in the tank?

Answer: _____

6. Perimeter of Oyster Beds

An oyster bed is 8 meters long and 5 meters wide. What is its perimeter?

Answer: _____

7. Area of an Oyster Bed

An oyster bed is 14 meters long and 6 meters wide. Calculate the area of the oyster bed.

Answer: _____

8. Sharing Oysters

A fisherman collects 72 oysters and shares them equally among 8 friends. How many oysters does each friend receive?

Answer: _____

9. Percentage Problem

40% of an oyster reef has been damaged by pollution. If the reef originally had 250 oysters, how many oysters have been affected?

Answer: _____

Oyster Challenges

10. Time Challenge

It takes 15 minutes to clean 20 oysters. How long will it take to clean 100 oysters?

Answer: _____

11. Money Problem

In 1835, oysters were very popular food, and you could buy 4 for 1 penny. How many oysters would you have been able to buy for a shilling (12 pence)?

Answer: _____

12. Pattern and Sequences Problem

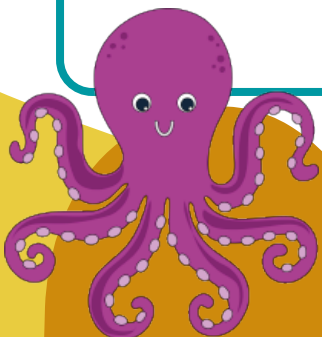
Oysters are planted in rows forming a pattern: 1, 4, 9, 16... What are the next two numbers in the sequence?

Answer: _____

Which question did you find the most challenging? Why?

What new skills did you use or learn in this activity?

Can you create your own oyster-related question?
Be prepared to share it with the class.



Oysters start their lives as males and change sex multiple times, usually ending as females.

