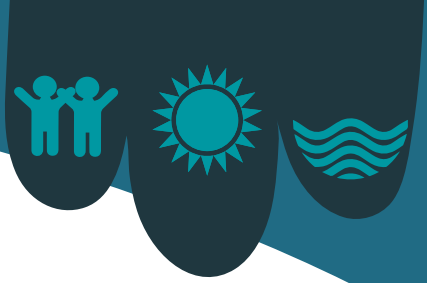
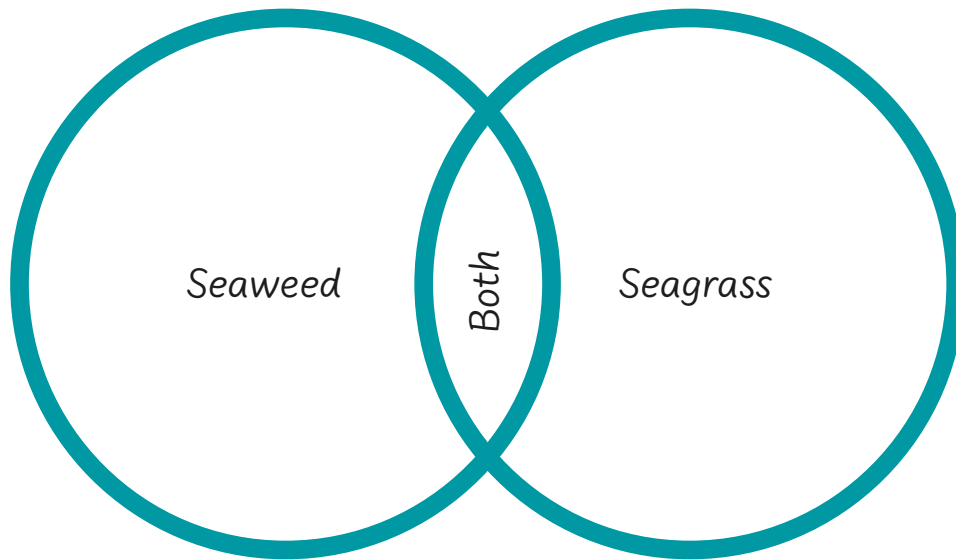


Seagrass vs Seaweed Sort



Use chalk or hula hoops to create two large overlapping circles



Cut out the cards below and label one circle 'Seaweed' and the other 'Seagrass'. The overlapping section represents 'Both'.

Lives mainly on
a rocky seabed

Produces
flowers

Is a true plant,
like terrestrial
(land) plants

Is a good home
for sea life

Lives near
the shore

Feels rubbery
to touch



Seagrass vs Seaweed Sort

Is eaten by
humans

Is an algae

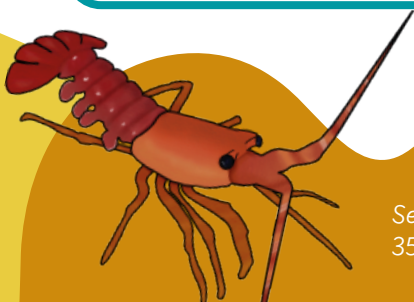
Attaches to
rocks with
holdfasts

Has roots that
anchor it into
the seabed

Provides oxygen
to the water
through
photosynthesis

Is a food source
for marine
animals, such
as turtles

Can be affected
by pollution and
climate change



Seagrasses store carbon up to
35 times faster than rainforest.

ADDITIONAL TASK

Use the blank cards to create
additional statements to add
to the diagram.