



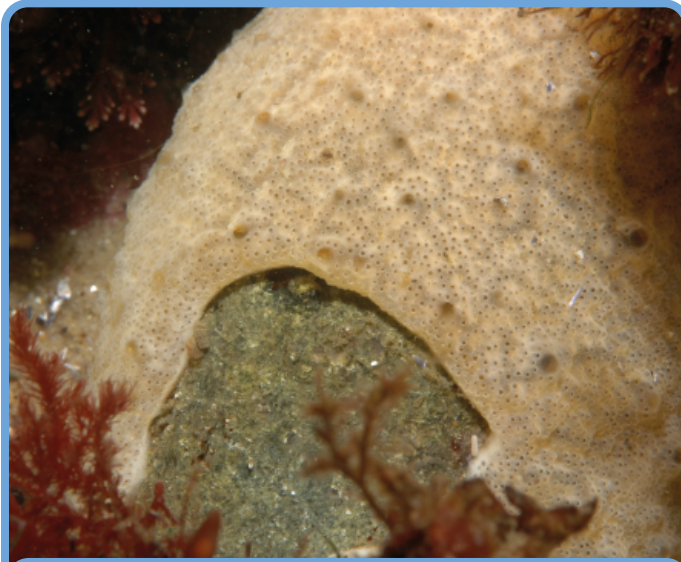
*Mitten crab*



*Rhododendron ponticum*



*Himalayan balsam*



*Carpet sea squirt*



*Mink*

Destabilises river  
banks by creating  
burrows

Toxic leaves  
make area  
uninhabitable  
for other species

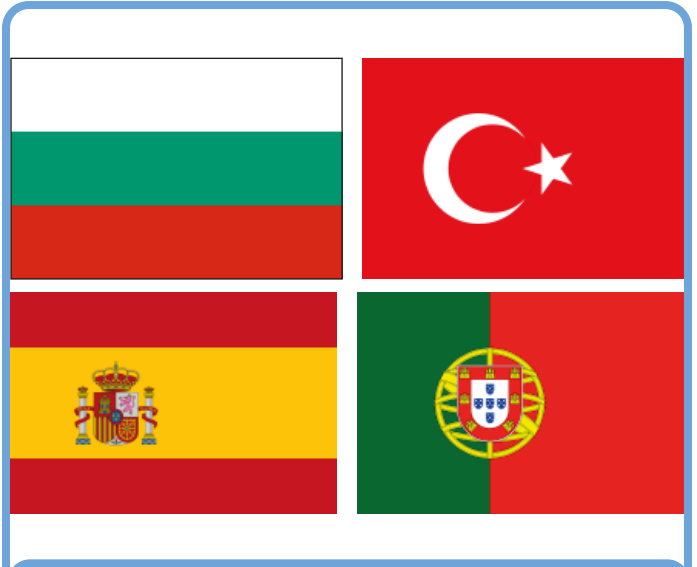
Out-competes  
native species for  
space, light and  
water

Spreads  
very rapidly,  
smothering all  
other species

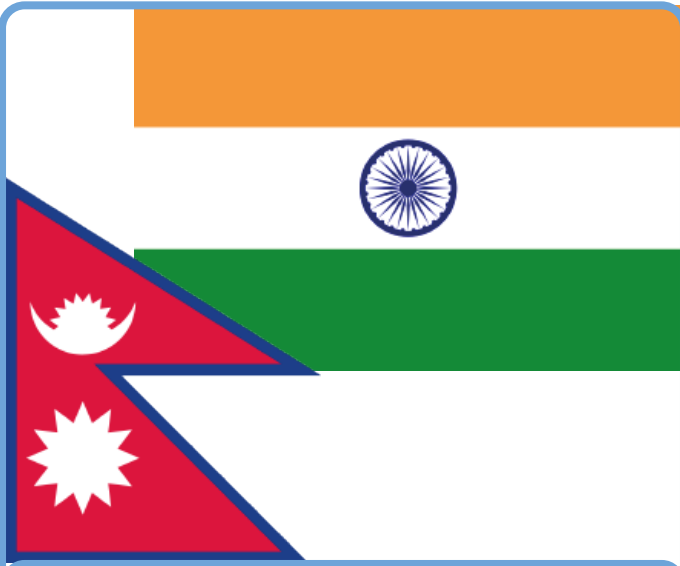
Eats bird eggs,  
young birds  
and other small  
animals



China



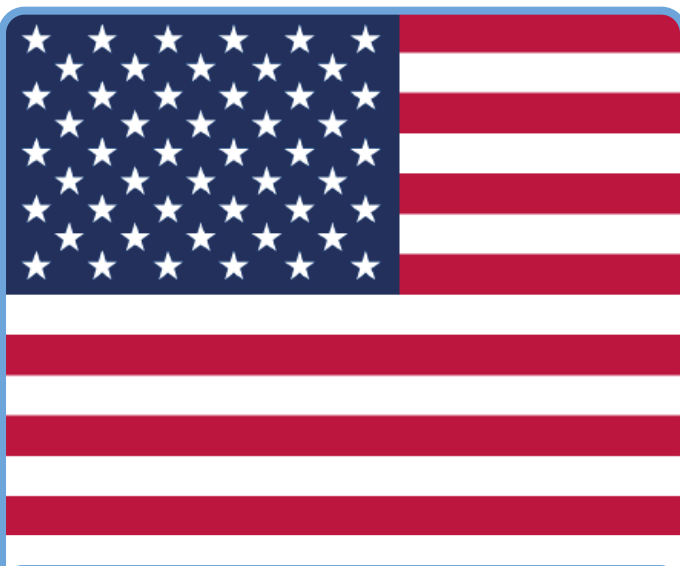
Bulgaria, Turkey, Spain, Portugal



India and Nepal



Not known



USA